

February 2012



THE SPIRE

The Presbyterian Church in Westfield, NJ
140 Mountain Avenue Westfield, NJ 07090
(908) 233-0301
www.westfieldpc.org



Invite...
Grow...
Serve...

February Highlights

- Youth ReBuilding Hope
- Middle School Snow Tubing, February 4
- JOY Lunch February 5
- Ash Wednesday February 22, Services at 12pm & 8pm
- Lenten Soup/Bread Lunches begin February 26
- Lenten Evening Prayer Services begin February 28, at 7pm
- Lunch & Movie, February 29, 12pm



Inside this issue:

Lent Begins	2
Men's Retreat Update	
Presbyterian Women Lunch and a Movie	3
Church Calendar	4
Christian Education	5
Youth Mike Samson HomeFirst	6
Mission	7
Senior Moment	8
Treasurer's Report	9
Happy Birthday	11

Youth ReBuilding HOPE

The youth of PCW have an amazing history of rebuilding hope through the youth mission programs at the church. By serving at Agape or participating in mission trips, they are always ready to give hope to others while also experiencing hope in their own lives.

In today's world, the pressures young people face everyday can be overwhelming, however, we, as a church, are in the unique position to offer them something that can make their lives better now and in the future. Through PCW mission opportunities we can give our youth:

Experiences with people outside the Westfield community that connect them to the world.

Hands-on projects to help them discover the amazing things they can accomplish on their own and as a group working together.

Lifelong ties to each other, to caring adults, and to the people they serve.

Increased love and hope in the God who sends them out and restores them along the way.

In February, through the Youth ReBuilding HOPE fundraising campaign, we joyfully reach out to our community to raise money for these important youth mission projects.

As a church community, we have both the ability and the resources to significantly impact the lives of young people – now and forever. In 2012, our continued goal is to offer our youth the following opportunities to serve others:

1. The Agape Community Kitchen: (Wednesdays, Elizabeth, NJ)
200 - 300 hungry people are served every week, 52 weeks a year
Over 135,000 meals have been served since May 3, 2000 – close to 12 years of continuously serving others

This is a true youth-led mission. Young people run the Agape; they lead; they serve; they train others

Between 30 and 50 youth from our church and the surrounding communities volunteer every week

200+ Adults from our church and community cook, bake, launder and volunteer on-site every year

Youth ReBuilding Hope donations will go toward the \$88,000 needed to keep Agape operating this year

2. The High School Mission Trip

Every year we work with High School kids on a hands-on construction and rebuilding project in a needy community

Youth ReBuilding Hope donations will go toward construction materials and operation costs for this trip

3. The Middle School Mission Trip

Every year we introduce younger youth to what it means to serve others through hands-on mission

Youth ReBuilding Hope donations will go toward off-setting the cost for each participant to go on this trip

Please join us for the Youth ReBuilding HOPE Kick-Off lunch on Sunday, February 5th following the 10:00 am service in Assembly Hall. The Youth Commission will be serving up chili, cornbread and other goodies. You'll have an opportunity to learn more about the youth mission projects.

Each Sunday in February, during both services, youth volunteers will tell the congregation how PCW youth mission projects have enriched their lives. In addition, please look for a table in the Narthex manned by Youth Commission and Youth Volunteers who will be able to talk about the programs and accept donations. Donations can also be sent
— Continued on page 3

The Spire

Lent Begins February 22



The Lenten season begins February 22, with the Ash Wednesday services. Services are held at 12 p.m. in the chapel and 8:00 p.m. in the Sanctuary. Both services include the imposition of ashes.

The first Tuesday in Lent, (February 28) begins our Lenten Evening Prayer Services held in the chapel at 7:00p.m. These brief, reflective services include Holy Communion and are a vital part of the Lenten season. The services will continue March 6, 13, 20, and 27. Please join us.

The Lenten Soup and Bread lunches will begin on Sunday, February 26, at 11 a.m. in the Assembly Hall (see article below.)

Everyone is welcome to take part in the Lenten program, *Unbinding Your Heart*. This is a seven week study (one hour per week in a small group) to help you grow in your relationship with God and to learn how to share that growth with others. You will also have the opportunity for daily devotionals and readings on your own.

Holy week begins April 1, (no foolin') with Palm Sunday services at 8 & 10 a.m.; Maundy Thursday Service, April 5, at 8 p.m.; Good Friday Services 12 p.m. & 7:30 p.m. and Easter Sunday services at 9:00 & 11:00 a.m.

We hope one of the above opportunities will fit into your Lenten journey!

Men's Retreat Wrap Up!



- ♦ fellowship
- ♦ learning
- ♦ laughter
- ♦ growth

I am just back and, while I do not have the perspective that can only come with time, my sense is that the 2012 Men's Retreat was the best yet. In fact, it may be the best men's retreat I've ever been involved with. Two obvious reasons present themselves for the success of this retreat. One is the extraordinary job our speaker, Robert Johnson, did. Another was that we explored prayer, a central practice of the Christian life.

But there is yet another factor that made this a terrific retreat. It is that over the past six years, the men of the church have built a wonderful sense of community. This sense of intimacy and trust allows the men to be real with one another. They can ask questions. They can challenge the speaker, which happened at one point, and go and grow deeper. This can only happen after a sense of community has devel-

oped.

The men's retreat is a reminder that the quality of our relationship with God is connected with the quality of relationships we have with each other.

Our church is in the midst of an intentional process of developing our relationships with God and one another. This coming Lent, for example, we are inviting our members to engage in regular, structured prayer and a small group experience.

I hope that you sign up and participate in one of the Unbinding Your Heart groups that will start later in February. I promise you, God will work through this to do amazing things. The most amazing thing will be the way it blesses and transforms your life.

— Ray Roberts

Lenten Soup and Bread Lunches Coming Soon!

Lenten Soup and Bread Lunches will make their delicious return on Sunday, February 26, following the 10:00 a.m. worship service.

Everyone is welcome to join us in the Assembly Hall for three kinds of soup, fresh bread, dessert and fellowship! No RSVP is necessary.

Mark your calendars and join us on:

February 26

March 4

(See page 11 for JOY lunch details!)

March 11, March 18, March 25

Many thanks to the hard-working fellowship commission for making the Advent Soup & Bread and Lenten Soup & Bread Lunches possible.



Youth ReBuilding HOPE

— Continued from cover
directly into the church office marked as
'Youth ReBuilding Hope'.

Please consider contributing to the Youth ReBuilding Hope campaign as the young people of our church and surrounding communities participate in the long history of Presbyterian mission and endeavor to bring hope to those who need it. When considering your donations, remember:

\$50 will purchase crafts for a hands-on mission project at a nursing home

\$250 will purchase hammers, nails and screws for a new housing project for a week

\$500 will provide 2 weeks of Agape supplies

The impact these projects have on those who give and receive help is immeasurable!



You can make a donation to Youth ReBuilding Hope by sending a check to the church made payable to "The Presbyterian Church" with "YRH" in the memo, by using the YRH envelopes found in the pews on Sunday morning, or you can stop by the Youth ReBuilding Hope table after church any Sunday in February.

Presbyterian Women

Whether you are a new church member or a seasoned one, there are circles that meet once each month that would welcome you! A "circle" is a group of Presbyterian Women who meet on a regular basis for prayer, study, giving and fellowship. Some groups meet in the morning, others in the afternoon and evening. There is one that would fit into your schedule! Join us as we continue our study of the Beatitudes with "Greatly Honored are the Pure in Heart".

BRING YOUR SWEET TOOTH TO CHURCH!

Get ready for the PW Lenten Bake Sale on Sunday, March 11! If you haven't yet sampled some of the homemade goodies that the Presbyterian Women bake, you have been

missing out! We have many talented bakers in our midst who donate their time and talent and provide us with melt in your mouth confectioneries! Assembly Hall is the place to be...all goodies guaranteed to be delicious!

BIRTHDAY BRUNCH

The annual Birthday Gathering will be held on Thursday, March, 15 at 9:30 a.m. in Assembly Hall. Circle 1 has been taste testing a number of recipes as they perfect the brunch menu. You don't want to miss this gastronomical extravaganza! Our speaker will be The Rev. Helen M. Beglin.

All women of the church are invited to attend!

—Carole Cook



Leap Day Treat at Lunch and a Movie!

The next Lunch & Movie will be held on Wednesday, February 29, and a Leap Day film appropriate for the occasion will be shown.

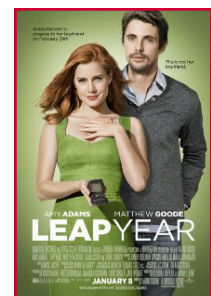
The movie, "Leap Year," is based on the Irish tradition that a man who receives a marriage proposal on Leap Day must accept it. Here, a woman heads to Dublin to propose to her "perfect" boyfriend, but after meeting a charming innkeeper on her way she must decide whether her original plan was the right one.

Amy Adams, Matthew Goode and Adam Scott star in this 2010 romantic comedy.

Just show up at noon with a sandwich. Beverages and dessert will be provided by members of the Senior Network Committee. Lunch will be in the George Plenty Room, and the movie will follow in the Christian Lounge.

No RSVP! We hope to see you there.



— Charlie Monzella



The Spire



FEBRUARY 2012

SUN	MON	TUE	WED	THU	FRI	SAT	
<h2>Youth ReBuilding Hope Month</h2>			1 7am Dawn Patrol 1pm Agape Prep 3:15 Agape 5pm C.O.W.	2 7am MS Breakfast 9am PW Board Mtg 7pm Chancel Choir	3 9:30 Pastors Bible Study 12pm Lunch & Book	4 7:30 Men's Breakfast 9am MS Snow Tubing	
			5 8 & 10 Worship 9am Adult & Youth Education 10am Children's Sunday School 11am JOY Lunch 11am YRH Kick-off	6 7:30 Theology Discussion Group	7 9am Searching 4 Work 9am Craftsmen 6pm Confirmation 7pm Outreach/Welcome 7:30 Communications Worship, Youth, Stewardship, 8pm Mission	8 7am Dawn Patrol 10am Worship Staff Mtg 1pm Agape Prep 3:15 Agape 5pm C.O.W.	9 7am MS Breakfast 9am PW Circles Meet 3:30 PW Circle Meets 7pm Chancel Choir
12 8 & 10 Worship 9am Adult & Youth Education 10am Children's Service 10am 2yrs-1st Gr Sunday School 5pm MS Fellowship 6:30 Youth Worship 7pm HS Fellowship	13 1:30 Parkinson Support Group 7:30 Stephen Ministry	14 9am Searching 4 Work 9am Craftsmen 1:30 Worship Staff Mtg 6pm Confirmation 7:30 Session 	15 7am Dawn Patrol 1pm Agape Prep 3:15 Agape 5pm C.O.W.	16 7am MS Breakfast 5:30 Zambia Team 7pm Chancel Choir	17 9:30 Pastors Bible Study	18 7:30 Men's Breakfast	
19 8 & 10 Worship 9am Adult Education 10am Sunday School 2yr-5th gr	20 PRESIDENTS' DAY Church Office Closed	21 9am Searching 4 Work 9am Craftsmen 1:30 Worship Staff Mtg 7:30 Deacons	22 7am Dawn Patrol 12pm Ash Wed Service 1pm Agape Prep 3:15 Agape 5pm C.O.W. 7:30 Lifelong Learning 8pm Ash Wed Service	23 7am MS Breakfast 9am PW Sewing 7pm Chancel Choir	24 9:30 Pastors Bible Study <div style="border: 1px solid red; padding: 5px; text-align: center;"> Women's Retreat February 24-26 </div>	25	
26 8 & 10 Worship 9am Adult & Youth Sunday School 10am Sunday School 2yr-5th gr 11am Lent Soup/Bread 5pm MS Fellowship 6:30 Youth Worship 7pm HS Fellowship	27 7:30 Stephen Ministry	28 9am Searching 4 Work 9am Craftsmen 1:30 Worship Staff Mtg 6pm Confirmation 7pm Evening Prayer 7:30 Office/Property	29 7am Dawn Patrol 12pm Lunch and Movie 1pm Agape Prep 3:15 Agape 5pm C.O.W.				

Christian Education

“ATTITUDE OF GRATITUDE” CHILDREN’S SUNDAY IS FEBRUARY 12TH!

On February 12th, children in K-5th grades will help lead the worship-service. This year the theme for Children’s Sunday is “Attitude of Gratitude.”

The children will write different parts of the worship service as well as actively lead parts of the service. They prepare for this special Sunday in their Sunday School classes on January 29, and February 5. We are asking parents to make a special effort to have their children attend Sunday School on those Sundays.

Two rehearsals for Children’s Sunday will be held. The first is Saturday, February 11th, at 4:00 p.m. Decorating the sanctuary will follow and anyone that can stay to help is welcome. The second rehearsal is Sunday, February 12th, at 9:00 a.m. **Please note: For each of the rehearsals we would like parents to be present so they understand what their children will be doing.** The children and the teachers really get excited about presenting this special worship service and very much look forward to it!

VACATION BIBLE CAMP IS COMING!

Plans are underway for our annual summer Vacation Bible Camp. Children age 4 through 5th grade are invited to participate. Children in 4th and 5th grades may sign up to be assistant leaders. Please check the Spire and the web site for dates, times and further information. Registration forms will be available in February. All families will be e-mailed the information in February as well.

2012 CHILDREN’S MISSION PROJECTS

For the remainder of the Sunday School year, we have two mission projects planned for our

2nd through 5th grade “We Believe” workshop rotation classes. One project involves assembling a soup mix into jars and then selling them at church in March. The second project is a mission fair where children learn about all the various mission activities that the Presbyterian Church (U.S.A.) is involved with. The Church on Wednesday (COW) program will also host some mission activities. They will be making Valentine’s Day cards for our home-bound members and St. Patrick’s Day table centerpieces for a local nursing home facility.

SUNDAY SCHOOL IN FEBRUARY

Each week our 2 year-old class listens to a bible story, does a related activity, and plays and enjoys a snack. Kids Discovering Worship (Age 3 years through 1st grade) will participate in the following story sessions: *Jesus and the Children, Jesus and Bartimaeus, Jesus and Zacchaeus.*

Our We Believe classes (2nd-5th grade) will be preparing for Children’s Sunday to be held on February 12th. They will also participate in a unit on “Feeding Five Thousand” through art, drama, games and cooking workshops.

MARK YOUR CALENDARS:

- Sunday, February 12, 2012
Children’s Sunday
- Sunday, April 1, 2012
Easter Egg Hunt
- Sunday, May 20
Kindergarten Bible Presentations
- Sunday May 20
Sunday School
- Teacher’s Appreciation Breakfast

—Mary Bielen

Sunday School



There's a Class for YOU!

Life Long Learning

Have you had a chance to check out the new DVD’s in Library about Jesus ministry and the life of the early church? You can find the DVD’s at the circulation desk. They may be checked out for 30 days.

The DVD’s were produced by the History Channel and the Arts & Entertainment Channel.

TRIANGLE Class continues to meet Sunday mornings at 9:00 a.m. in the Christian Lounge. Join The Rev. Hibbert Moss as he leads the group discussing the weekly scripture lesson being

used in the sermon. Whether you like to have an active part in the discussion or just listen, please feel free to stop by.

QUESTERS continues their study on *The Present Word*, Sunday mornings at 9:00 a.m. in the George Plenty room. Participants can take turns leading the weekly study. They also read biblical passages and commentary during the week in preparation for their Sunday morning class. For more information, contact Nancy Smith, alan.nancy.smith@gmail.com.



The Spire

Youth



MIDDLE SCHOOL BREAKFAST CLUB

Come join us each Thursday at 7 a.m. in the Jim Cole Room. All 6th, 7th and 8th grade youth are invited. We play MANHUNT, have a delicious breakfast, and ride to school together. No sign ups necessary! Bring \$3 for breakfast. Is there a better way to start your day?

IT'S NEVER TOO LATE TO START COMING TO SUNDAY SCHOOL!

Sunday school is every Sunday at 9:00 a.m. for all youth, grades 6th-12th. Even if you haven't come to Sunday school in the past, WE'D LOVE FOR YOU TO JOIN US! 6th-9th grades meet in the Jim Cole room at 9:00 for BAGELS AND DONUTS. 10th-12th grades meet in Lower Westminster Hall at 9:00 and will also experience the joys of eating.

AGAPE

Keep your Wednesdays open and come help us serve over 250+ of our friends in Elizabeth. We meet EVERY Wednesday at 3:15 p.m. in the church parking lot. No experience necessary. We need adult & youth volunteers. You will be so glad you came!

FELLOWSHIP

There will be NO YOUTH FELLOWSHIP on February 5th. Join us for fellowship every other Sunday, of course! Middle School fellowship meets at 5 p.m. Bring \$5 for dinner. High School fellowship meets at 7 p.m. and dessert is included. All youth are invited to worship at 6:30 p.m. in the chapel.

¹⁶ As Jesus passed along the Sea of Galilee, he saw Simon and his brother Andrew casting a net into the lake—for they were fishermen.

¹⁷ And Jesus said to them, 'Follow me and I will make you fish for people.'

-Mark 1:16-17

Follow Me

The Christian life isn't something we enter into or live alone. When Jesus called his disciples in this passage, he called them into living life together with a group of others. Twelve of them, to be exact.

The life of a disciple is not an isolated or autonomous one. So often, we tend to think of our faith or our belief in God as a private thing. Yet, nowhere in the Bible is there a picture of an individual person of faith isolated from a community of faith. Faith and discipleship simply do not exist without community. In fact, without community, they grow weak and are eventually extinguished altogether.

This is why we are inviting everyone in the congregation into Unbinding small groups this Lent. In a sense, we're starting from scratch. Jesus called his disciples into a small group of 12. They followed him. They questioned him. They sometimes doubted and sometimes believed. They obeyed *and* disobeyed. But each of them was surrounded by others who were dedicated to following Jesus. A disciple surrounds him or herself with others who have also made the decision to follow Jesus. We're in this together, because Jesus has called us *together*. "Follow me."

—Mike Samson

HomeFirst

At its regular Board meeting, the Homefirst Board of Trustees participated in the collection for socks and apples to be distributed on January 26, 2012 when volunteers will count those who are homeless in Union County. The 6th annual survey, known as the "Point In Time" homeless count, is mandated by U.S. Department of Housing and Urban Development. Hundreds of volunteers around the state will hold similar events on the same day. Homefirst staff will survey folks who lunch at Grace's Kitchen in Plainfield. In addition, staff will participate in the early morning (4 a.m.) outreach in Plainfield. The efforts of countless volunteers across the country and the numbers of homeless people reported help direct funding initiatives through federal, state and county agencies. These funds provide housing, case management, medical services and other support services to individuals and the growing number of homeless families.

—Marybeth Lapham



Nelson Espeland and Casey Woodruff, Board Members for Homefirst, display the apples and sock donations that will be handed out to those homeless individuals in Union County who are surveyed as part of the "Point In Time" survey that will be done on January 26, 2012.

The Spire

Mission

For many years, our church has been a temporary shelter for women and families who have found themselves homeless, providing safe and warm lodging for a week at a time, in the basement of Westminster Hall. We supported the efforts of HomeFirst for over twenty years as they coordinated a temporary shelter system for their clients. HomeFirst is now focusing their efforts on providing permanent housing for those in need and are no longer offering the temporary shelter system. As many of you know, we then learned of the FISH Hospitality Network. The director, Susan Baybutt spoke to Mission Commission about bringing our church on board as a host congregation.

Mission Commission voted unanimously to move forward with FISH and we greeted our first group of guests on December 4. The group consisted of five women and six children who, for a variety of reasons found themselves in need of shelter. To say that our volunteers jumped in would be a gross understatement. From the set-up crew led by Kevin Klofta, to the clean-up crew led by Billy Cook, Matt Osment and Jake Klofta and all of the volunteers in-between, this was a Christ-inspired week.

We saw Christ at work as the guests received Christmas gift cards from an anonymous donor; as connections were made and have continued between the guests and our volunteers; as volunteers paid for a trip to the Service League for the women to purchase business attire for upcoming job interviews and their existing jobs. There were numerous instances of side-by-side ministry during the week as friendships and understanding between our congregation and our guests grew. Single

mothers working hard to raise their children in difficult circumstances gave us all an appreciation of what we take for granted, each and every day. Imagine packing up all of your belongings and being shuttled between churches for weeks as you await word of an apartment; then imagine doing that with three young children. As difficult as that is for us to even think about, the guests that we hosted would tell you that they appreciated what we had to offer. They thought that their accommodations were wonderful and they loved all of the volunteers! The guests were so thankful that we had a washer and dryer for them to use as they usually have to take everything to the laundromat. Our space also offers the guests a shower as many of the churches in the FISH rotation do not have bathing facilities so the guests go to a local YMCA. The meals supplied by the Congregational Church were a big hit with all of the guests.

All of the pieces that go into making it a successful week, worked and for that we are thankful. We will be hosting another group of guests the week of March 4-11 and welcome volunteers! Please prayerfully consider this hands-on ministry.

— Carole Cook

Do you have a Selectric typewriter that you no longer use?

FISH Network would welcome your donation!

Please contact Carole Cook
chcook22@yahoo.com.



PCW takes part in
FISH
homeless program!



Flowers for Worship Services

Every year at Christmas and Easter, the congregation has the opportunity to give flowers in memory of or in honor of a loved one. The names are then listed in the bulletin insert.

Did you know that you can give flowers for our Sunday worship services as well? Not only can you give flowers in memory of or to honor a loved one, you can also give flowers to mark a special occasion, event, or to give thanks to God. You can also request a particular type of flower or color for your arrangement!

If you would like to arrange for flowers September through May, please contact Debbie Bailey

(233-3059) for the Chapel, or Marylyn Straight (232-7004) for the sanctuary. (There is also a sign-up sheet located outside the Chapel and in the narthex of the Sanctuary on Sunday mornings.)

Following the Sunday services, the flowers are distributed to members of the congregation who are homebound, by the Flower Ministry Team.

Brighten up our worship space and bring joy to a homebound member. Give flowers.



The Spire

Senior Moment



Kathryn Quinn

EDITOR'S NOTE — *This is another in an occasional series of interviews with long-time members of The Presbyterian Church in Westfield or previous churches to learn their views on matters involving our congregation.*

Nurses are known to have a passion for guiding patients back to good health. But when she was a nurse, Kathryn Quinn had one patient whom she guided to the altar!

She was born Kathryn Hiscox on July 31, 1925 in Wilkes-Barre, Pennsylvania and spent most of her early years there. In fact, her brother and sister-in-law still live there.

She attended Bucknell Junior College, founded by Bucknell University as an extension school. She then went to the Cornell Nursing School in New York City, earning a B.S. degree in 1947.

While in nursing school, World War II was in progress and Kathryn became part of the Cadet Nurses program. Participants wore special uniforms, a gray suit with a red stripe, so that they would be a visible reminder to the public of the federal government's support of scientific education.

After graduation, Kathryn started her career at New York Hospital. While there, she saw the first uses of penicillin as a treatment for infections and also the beginning of the use of stents for heart disease. She worked in a ward for men's medicine and later became the head nurse on the metabolic research unit.

She had only eight patients but some of them had such health problems as polio and muscular dystrophy. One of her patients, Don Quinn, was a medical student who had developed polio, and after a "time out" he returned as a subject in the study of the effects of bed-rest on patients. The conclusion of the study indicated that keeping patients immobile contributed to their physical decline.

Even after being released from Kathryn's unit, Don returned to the hospital often to visit her. A romance developed and they were married in 1950 while he was still in medical school. After an internship, Don became a resident at Kings County Hospital in Brooklyn and then held a position at the Veterans Hospital in the Bronx, which she says paid enough money so they could start a family.

However, Kathryn developed endometriosis, which can cause sterility. She was almost resigned to her situation when a good friend, Dr. Donald Johnson, performed what she calls "one

great blessing," which allowed her to have four children. Regan was her first-born, followed by Rebecca, Don and Charity.

They lived in Easton, Pennsylvania from 1957 to 1997. Don died in 1995 at the age of 69 after his polio reactivated and he developed a respiratory problem.

Early in her career, Kathryn had worked about ten years as a nurse with the Department of Health in New York City before staying home with her children until Charity was in kindergarten.

In the 1960s, there was a shortage of teachers and Lehigh University had a special two-year Master's Degree program for people with an undergraduate degree to become certified as a teacher. Kathryn's interest in early childhood education drew her to the program; she taught in the Nazareth School District for 27 years in the first and second grades.

Kathryn always had been a Presbyterian. Rebecca and her children were already members of the Presbyterian Church in Westfield when Kathryn moved to Scotch Plains in 1997. At that time, Helen Beglin was Director of Christian Education and Kathryn found the Adult Education program very interesting.

Ruth Lindgren invited her to join her circle and Kathryn became a member of Presbyterian Women before she became a member of our church. "Ruth pulled me in," she says with a smile. Not only is she a faithful member of Circle 2, Kathryn attends Dr. Ray Roberts's Bible Class on Fridays. She is a new member of the Senior Network Committee and is part of the Deacons' team delivering flowers after the Sunday services.

Attending courses for senior citizens offered through Union County College is one of her favorite things to do. Most recently she took a drama course and a course in 19th Century Literature. Public Television and good movies are favorite pastimes. She also is a member of the Garden Club. A primary activity in her life now, she says, is "going to the doctors — five of them."

Until a couple of years ago, Kathryn volunteered with the Literary Volunteers of Plainfield. Many of her students were immigrants waiting to become American citizens. Several had not finished high school and wanted to improve their situations.

- Continued on page 10

The Spire

Treasurer's Report

Copies of the 2011 Annual Report – Part II Financial Report are now available to any interested member, and may be found in the church office and in the Narthex.

Consolidated Cash Flows for 2011:

	12 MONTH 2011	12 MONTH 2010	DIFFERENCE 11 v. 10
Total Cash Receipts	\$1,902,980	\$2,681,967	(\$778,987)
Total Cash Expenditures	\$1,971,300	\$2,321,933	(\$350,633)

In 2011, the lower level of cash receipts vs last year is primarily due to two things: *total bequests* received were \$197,804 in 2011, as compared to \$397,259 received in 2010; additionally, total 2011 *investment capital losses* were (\$25,859) vs. 2010 capital gains of \$395,156. Cash expenditures in 2011 were lower than those in 2010 mostly due to the amount spent in 2010 for the purchase and renovation of the church manse (\$468,000).

Total 2011 Mission Spending *facilitated* by the church during 2011 totaled \$302,914. This figure represents 15.9% of **all** dollars that were *received by the church* during the year and represents expenditures made directly from the Annual Operating Fund budget, Agape, the Youth Mission Trips, Zambia Team activities and the numerous special appeals, such as One Great Hour of Sharing, and the Joy Gift. This compares with the \$314,705 on Mission spending in 2010 (or 11.7% of all receipts)

2011 Annual Operating Fund

Of the more than 80 separate accounts tracked by the church finance office, the largest account is that of the Annual Operating Fund, which represents 70% of each consolidated revenues and consolidated expenses.

	2010 ACTUAL	2011 ACTUAL	2011 BUDGET	2012 BUDGET
Pledges	\$991,885	\$984,221	\$1,000,000	\$1,000,000
Other gifts	\$105,818	\$125,710	\$100,000	\$100,000
Space Fee	\$129,853	\$131,912	\$132,600	\$136,000
Investments	\$-	\$85,247	\$60,000	\$60,000
Total Revs	\$1,227,556	\$1,327,090	\$1,292,600	\$1,296,000
Expenses				
Net-In	\$(169,906)	\$(46,194)	\$(137,310)	\$(123,360)

For all of 2011, the Annual Operating Fund net deficit was (\$46,194), as compared to the (\$137,310) budgeted. Total inflows were \$1.33 million, including (for the first time) more than \$85,000 of Unrestricted Endowment investment income. On a comparable basis with prior years, income of \$1.24 million was up \$15,000 from the \$1.23 million in 2010. Total outflows were \$1.37 million, or \$24,000 lower than those in 2010.

Annual Operating Fund receipts were \$34,500 higher than budgeted, with total offerings \$10,000 above the amount budgeted, and endowment investment income higher by \$25,000 vs budget, with the difference being a modest shortage in space fee income.

Annual Operating Fund expenses were at or below budgeted levels, most significantly due to:

- Personnel expenses \$35,800 lower than budgeted, in large part due to the departure of the Music Director, and also the fact that the ministerial staff spent less than the full amount of their reimbursable expense allowances.
- Most every Commission spent less than they were budgeted to spend for the year, totaling \$21,000 in aggregate.

The Unrestricted Endowment is the source of support when the church runs an operating deficit.

The Agape Community Kitchen income statement balanced out with \$68,143 in each revenues and expenses in 2011. Much of Agape's funding comes from various grants, and these are drawn upon as expenses are incurred. 2011 expenditures included money from the Church budget (\$5,000), from Youth ReBuilding Hope (\$3,783), from Presbytery (\$1,500), grants from foundations (\$36,100) and money and receipted donations from members and other individuals.

— continued on page 10

The Spire

Treasurer's Report

— continued from page 9

The Van Dellen Scholarship Fund made distributions of \$14,000 for scholarship expenses during the year. The Van Dellen endowment currently amounts to just over \$614,000, of which \$533,210 is permanently restricted principal that was received in 2003 & 2004 from the estate of Florence Van Dellen. All forms of income are to be directed toward college scholarships for children of pledging members. **Applications are available in the church office for current high school seniors.**

Van Dellen Scholarship Recipients

2008 recipients (receiving tuition funds for the 4th year of the 4 year award):

Taylor Carlson, Rachel Iannazzone

2009 recipients (receiving tuition funds for the 3rd year of the 4 year award):

Mallory Boesch, Linda Timko

2010 recipients (receiving tuition funds for the 2nd year of the 4 year award):

Chris Heinbokel, Jill Pate

2011 recipients (receiving tuition funds for the 1st year of the 4 year award):

Alexander DuMont, Charles Timko

2011 MEMORIAL GIFTS AND BEQUESTS

2011 Gifts received into the Unrestricted Endowment

in memory of:

Henry Anderson, David Carlson, Muriel Cook, Steven Dvorak, Lenore Eakeley, Jeffrey Ehrhardt, Bernadette Fecher, Ruth Ann Gordon, Paul Hjorth, Jeanne Meikeljohn, Ted Nelson

2011 Memorials with Designation received:

Agape Fund in memory of Donna Budden, Sonia Kassinger, Nancy & Earl Roles

Cemetery Revitalization Fund in memory of: Henry Anderson, Gary Kehler

Music/Memorial Anthem Fund in memory of: Janice Irvin, Jim & Mary Lou Taylor

Paschal Candles given in memory of: Lee Seigle

Youth ReBuilding Hope Fund in memory of: Barbara & Carl DuMont

2011 Gifts with Designation received:

Agape Fund in honor of: Joan Robbins

2011 bequests received:

into the Unrestricted Endowment: from Ellen Anthony, from Betty McDiarmid (remainder from final estate settlement), and from Marion Templeton

Into the Carrie Holmes Memorial Fund: from Richard Holmes (remainder from final estate settlement)

—Marybeth Lapham

Senior Moment

—Continued from page 8

Politics interests her greatly; she especially is concerned about the treatment of immigrants, civil rights issues and education. Her advice to the younger generation is to pay attention to what is happening in the world because young people will be the ones to change and improve the world.

Kathryn is an optimistic person with a quick smile and a gentle laugh. She is very proud of her family. "My grandchildren range in age from six to 33

years old; I have two great-grandchildren and another on the way," she says.

Most of her children and their spouses are doctors or work in some area of the health industry, a great tribute to her late husband, she believes.

"I enjoy life and am glad to be here," she adds.

We also are glad that Kathryn is here and is part of our church family.

—Tay Miller

The Spire

Happy Birthday

FEB 1 Annis, Jane McMahon, Georgeanne Simpson, Cailly Marhefka, Vlad Slifer, Carter Slifer, Madilynne	FEB 6 Liggitt, Jean Scaperrotta, John Gerckens, Lynn Stravach, Michael Johnson, Ella FEB 7 Ramsden-Nary, Barbara Marino, Jeff	FEB 14 Maines Jr, Ralph Howland, Tom Ruiz, Thomas FEB 15 Rippe, Marianne Lenehan, Janice Bredlau, Susan McMahon, Meghann Reed, Aiden Murphy, Sienna	FEB 20 Smith, Margaret Eickemeyer, Brenda Kurz, Judith Embry, Griffin Murtishaw, Will FEB 21 Senatore, Rosemary Malcolm, Bruce Mott, Peggy Pinkin, James Enes, Robert Fleschler, Katherine Cunningham, Susan Shpunder, Theodore Hyman, Jeannine Curtis, Matthew Grom, Christian Zanfagna, Andrew	FEB 24 Dencker, John FEB 25 Pecka, Phyllis Hannah, Barbara Lorentzen, Kent Kolterjahn, Donald Brug-Panton, Pamela Dailey, Matt Kinsella, Joanne Schundler, Robert Mann, Scott McCurdy, Matthew Stierhoff, Matthew Meyers, Shelby FEB 26 Andreassen, Inger Hevert, Nancy Perry, Lee Ince, Robin Dix, Adam Zippler, Kevin Armstrong, Kristy Fortino, Gregory Baldwin, Caroline Beke, Matthew
FEB 2 Pope, Mary Shea, Evy Beese, Mildred Danser, Rick Morse, Linda Vierschilling, Scott Maccubbin, Tyler Ramage, Ellen Lapham, Kelly Greco, Kristen	FEB 8 Husch, Darlene Cederqvist, Gertrud FEB 9 Kertis, Eugene Factor, Clinton FEB 10 Wahlers, Jean Taylor, Kimberly Donatelli, Renee Kobasa, Joann Bungerz, Jessica	FEB 16 Grant, Nancy Phelan, Tom Kolb, Pamela Hewit, David Speir, Randall Marhefka, Laura Wang, Simon FEB 17 Maggio, Glenn Taylor, Jet Rotella, Tyler	FEB 22 Ainslie, William Meierdierck, Georgia Sobala, Joseph Swingle, Joseph Pate, Cheryl Elizes, Romerl Anderson, Ryan Gerckens, Christopher Burgdorf, Christian	FEB 27 Wilson, Marjorie Howell, Emily Stock, Kevin Vasel, Kelly Kim, Katherine
FEB 3 Fredericks, William Klofta, Tisha Thode, Edward Luker, Mary Kate	FEB 11 Wolford, Tyler Hatfield, Andrew Paden, Amanda Paden, Dustin Paden, Jason	FEB 18 McDaniel, June LaMond, Cathleen Klofta, Jacob Braun, Heather Fallo, Robert	FEB 23 Plenty, Jean Blair, Linda Devaney, Michael Slifer, Kimberley Zanfagna, Philip Haggerty, Hunter	FEB 28 Foster, Ellen Elsasser, Mark DuMont, Alex Cavallo, Kristen
FEB 4 Johnson, Penelope Rosin, Christopher Wright, Karyn Burslem, Connor Hall, Jack Busse, Paige	FEB 12 Brown, Christine Ince, Michael Dilzell, Susan Weldon, Maria	FEB 19 Darsie, Doris Keenan, Jeanmarie Sullivan, Evan Quinlan, Fiona		
FEB 5 Longaker, Robert Peterson, Sharon Hewitt-Taylor, Penelope Bredlau, Marianne Layer, Lajla Demers, Eric	FEB 13 Chamberlin, Ruth Miller, Tay Donatelli, Stanley Grom, Holly Grom, Tim			

JOY Lunch

All adults (age 55+) are welcome to come to the JOY Lunches. If you currently do not receive the monthly post card reminder, please contact Betty Born in the church office to have your name added to the mailing list.

The February JOY Lunch is Sunday, February 5, 11:00 a.m. in the Assembly Hall and the Fellowship Commission has out done itself this month!

On the menu: *Lois Wiehl's Cranberry Salad, delicious Meatloaf, Grandma Lillian's Home-*

made Macaroni and Cheese, Green beans Almondine, and Apple pie with Vanilla Ice Cream for dessert!

This month's guest speak is Jim Cyr, Story-teller. Jim will present a program in the Christian Lounge of stories and songs to entertain our guests.

Please RSVP to the church office by Thursday, February 2! You won't want to miss out!



The Presbyterian Church in Westfield, NJ

140 Mountain Avenue Westfield, NJ 07090

(908) 233-0301

Fax: (908) 317-9218

Visit us on the web: www.westfieldpc.org

Office Hours: Monday through Friday, 9:00am-5:00pm

Rev. Dr. Ray Roberts, Senior Pastor	45
E-mail rroberts@westfieldpc.org	
Rev. Mike Samson, Associate Pastor	37
E-mail msamson@westfieldpc.org	
Rev. Emily L. Wilmarth, Associate Pastor	46
E-mail ewilmarth@westfieldpc.org	
Mary Bielen, Director of Christian Education	38
E-mail mbielen@westfieldpc.org	
Kathleen Connolly, Interim Director of Music	39
E-mail kconnolly@westfieldpc.org	
Tina Barulli, Comptroller	23
E-mail tbarulli@westfieldpc.org	
Lou Ann Kaplonski, Church Administrator	26
E-mail lkaplonski@westfieldpc.org	
Betty Born, Church Secretary	24
E-mail bborn@westfieldpc.org	
Dawn Adam, Executive Secretary	47
E-mail dadam@westfieldpc.org	
Linnette Mercado, Youth Secretary	22
E-mail lmercado@westfieldpc.org	
Jim Kajosevic, Maintenance Supervisor	34
E-mail jkajosevic@westfieldpc.org	
Kristin Pirich, Mission Coordinator	973-601-3371
E-mail kpirich@westfieldpc.org	
T.O.P.S	908-654-5157
Nursery School	908-233-0766
Furniture Assist	
E-mail furnitureassist@westfieldpc.org	



SUNDAY MORNINGS AT

THE PRESBYTERIAN CHURCH IN WESTFIELD

- Worship Service in the Chapel at 8:00 a.m.
- Christian Education for Youth (grades 6-12) & Adults at 9:00 a.m.
- Worship Service in the Sanctuary at 10:00 a.m.
- 10:00 a.m. Sunday School (2yrs-5th grade)

Child care for infants thru 3yr olds is available in our cribbery located in Room 104 in the lower level of the Christian Ed. Building, 8:00 a.m. - 11:15 a.m.